



LION[®]

ready for action

**FIRE BOOTS THAT
DON'T STOP
UNTIL YOU DO.**

High-Performance First Responder Footwear

produced by *Thorogood*[®]

STRUCTURAL FIRE BOOTS | EMS/WILDLAND BOOTS

STRUCTURAL FIRE BOOTS

STRUCTURAL FIRE BOOTS



**YOUR
CORPORATE
LADDER
IS HOTTER
THAN MOST**

A rush job entails running 10-33 in response to an alarm. Getting a good client review means an emotional sob of thanks from the parent of a child you've just rescued. And a successful project might include saving thousands of acres of forest, or countless memories from a home.

Let's face it: the stakes at your job are higher than those of the average American worker.

And because your shift lasts 24 hours (and sometimes beyond), you need footwear to handle everything from fighting a fire to filling out paperwork to cleaning the station. You need footwear that you don't need to worry about.

That's a tall order. Thankfully, we can fill it.

LION-Thorogood has relentlessly focused on craftsmanship, innovation, and comfort, while recognizing the importance of footwear to your livelihood and getting the job done.



STRUCTURAL FIRE BOOTS

KnockDown Elite 14" Leather Boot

No matter how many times the alarm sounds during your shift, these black flame-resisting leather upper KnockDown boots go on with ease. Once your foot slides in, the ankle lock system holds you firmly in place until you use the handy heel kick plate to take them off. Our exclusive Vibram® Fire & Ice All-Terrain Sole provides exceptional traction on any surface; including pitched roofs and steep embankments. It stands up to the heat and will help keep a steady foot when fighting winter fires and the water turns to ice. The PTFE Moisture Barrier also repels dangerous fluids. Take a hit to the heel thanks to the Poron® XRD® padding - the same impact protection used in motocross racing. Composite Safety Toe, Lenzi L-Protection® insole, and steel triple-rib ladder shank protect your foot from impact and the strain of working on ladders. And because you might be on your feet for hours, the dual-density removable insole molds to the shape of your foot to keep you comfortable until you're back at the station.

- Waterproof, flame-resisting leather upper with abrasion-resisting rubber toe and heel protection.
- Removable dual-density polyurethane insole
- Lenzi L-Protection® flexible, non-metallic, puncture-resisting insole
- Steel triple-rib ladder shank
- Exclusive Vibram® ATS sole with Fire & Ice technology
- Cement construction
- Certified to meet NFPA 1971 structural & NFPA 1992 liquid splash
- Meets ASTM F2413-11
- CSA Z195-14 Edition-7



3M Scotchlite®
Reflective Material HI-VIS

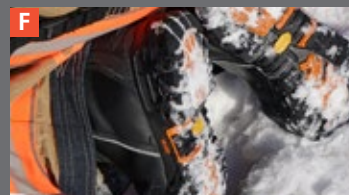
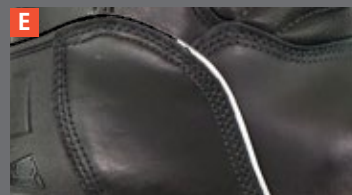
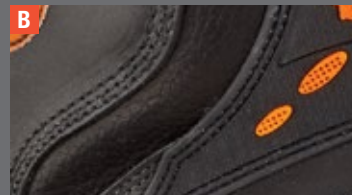
STRUCTURAL FIRE BOOTS

STYLE #	SLIP-RESISTING	WATERPROOF	PUNCTURE-RESISTING	BLOOD-BORNE PATHOGENS	EH/SD	TOE PROTECTION	STRUCTURAL & HAZMAT	SIZES:	N	M	W	XW
804-6389	✓	💧	✓	🩸	EH	Comp [75]	✓	MEN'S		5-16	5-16	5-16
504-6389	✓	💧	✓	🩸	EH	Comp [75]	✓	WOMEN'S	5-10	5-10	5-10	

TECHNICAL FEATURES

Structural
CERTIFIED
NFPA 1971

Hazmat
CERTIFIED
NFPA 1992



- A. Air Venting System
- B. Water-Proof, Breathable Membrane
- C. Easy-Dooff Heel Kick Plate
- D. Non-Metallic Composite Safety Toe
- E. Ankle Lock System and Ankle Protection
- F. All-Terrain Sole and Side Wall Lugs



CALL 1.800.421.2926

STRUCTURAL FIRE BOOTS

STRUCTURAL LEATHER BOOTS



STRUCTURAL FIRE BOOTS

QR14 14" Structural Leather Boot

LION-Thorogood's new QR14 bunker boots are built for comfort, durability and safety. The flex gussets allow the boot to move with you. 3M™ Scotchlite Hi-Vis piping in these waterproof, flame- and cut-resisting leather bunker boots creates a high-visibility look when exposed to direct light. The aggressive, slip-resisting outsole with 90 degree heel and ladder grips provide exceptional traction on any surface. GORE® CROSSTECH® triple layer moisture barrier is the toughest in the industry, delivering rugged, long-lasting protection that exceeds the requirements of the NFPA 1971 standard. The composite safety toe, Lenzi L-Protection® insole, and steel triple-rib ladder shank protects your foot from impact, puncture, and the strain of working on ladders. Extra padding in the shin and ankle protects you from ladder rungs and other impacts. Slip-resistant in all conditions and heat-resistant when the going gets hot, these all-weather boots don't quit until you do.

- GORE® CROSSTECH® triple-layer moisture barrier protects against blood-borne pathogens
- Waterproof, flame- and cut-resisting leather upper with abrasion-resisting rubber toe
- Steel Triple-Rib Ladder Shank
- Proprietary Traction Flex outsole
- Cement Construction
- Certified to meet NFPA 1971

GORE® CROSSTECH® PRODUCTS
 3M Scotchlite® Reflective Material HI-VIS



SOLE 2

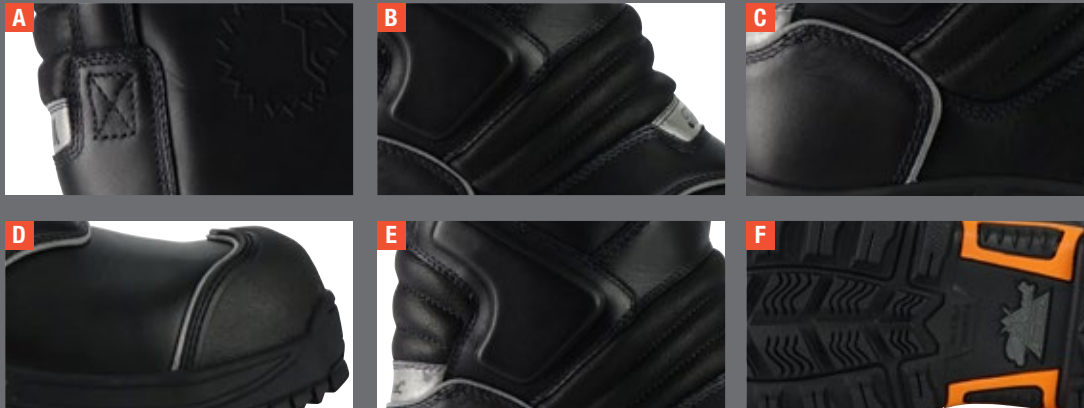
STRUCTURAL FIRE BOOTS

STYLE #	SLIP-RESISTING	WATERPROOF	PUNCTURE-RESISTING	BLOOD-BORNE PATHOGENS	EH/SD	TOE PROTECTION	STRUCTURAL & HAZMAT	SIZES:	N	M	W	XW
804-6369	✓	💧	✓	🩸	EH	Comp [75]	✓	MEN'S		5-16	5-16	5-16
504-6369	✓	💧	✓	🩸	EH	Comp [75]	✓	WOMEN'S	5-10	5-10	5-10	

TECHNICAL FEATURES

Structural
 CERTIFIED
 NFPA 1971

GORE®
 CROSSTECH®
 PRODUCTS



- A. GORE® CROSSTECH® Triple-Layer Moisture Barrier
- B. Powerflex Gussets
- C. 3M Scotchlite™ Reflective Material
- D. Lightweight, Composite Safety Toe
- E. Ankle and Shin Pads
- F. Lenzi L-Protection

RUBBER FIRE BOOTS

INSULATED RUBBER BOOTS



RUBBER FIRE BOOTS



HellFire Kevlar™ Insulated Rubber Boot

Enjoy superior protection and comfort while fighting fires in these rubber insulated structural bunker boots with a flame- and heat-resisting lug outsole. A stainless steel puncture-resisting bottom plate provides a barrier between your feet and whatever you have to walk over to contain the fire. Experience added safety and comfort in the form of an oversized steel toe and a DuPont™ Kevlar® yellow knit one piece liner five times stronger than steel. Work on ladders or crawl over debris without discomfort thanks to the cushioned shin guards. Vulcanized construction guarantees a durable, shock-absorbing fit that won't melt or degrade in extreme heat or cold. Removable superknit-covered polyurethane insole absorbs shocks so you can stand against the flames in these NFPA boots for as long as it takes to get the job done.

- Flame-/heat-resisting rubber
- GORE® CROSSTECH® moisture barrier
- Removable Superknit covered, polyurethane footbed
- Steel Triple-Rib Ladder shank
- Stainless steel puncture-resisting bottom plate
- Hellfire™ traction lug sole
- Abrasion-resisting rubber T-toe
- Vulcanized construction
- Certified to meet NFPA 1971 structural and NFPA 1992 liquid splash

Available in whole and half sizes in 3 widths to ensure proper fit and comfort.



STYLE #	SLIP-RESISTING	WATERPROOF	PUNCTURE-RESISTING	BLOOD-BORNE PATHOGENS	EH/SD	TOE PROTECTION	STRUCTURAL & HAZMAT	SIZES:	N	M	W	XW
807-6000	✓	💧	✓	🔴	EH	Steel [75]	✓	MEN'S		5-16	5-16	5-16
507-6000	✓	💧	✓	🔴	EH	Steel [75]	✓	WOMEN'S	5-10	5-10	5-10	



HellFire Felt Insulated Rubber Boot

Enjoy superior protection and grip while fighting fires in these flame- and heat-resisting rubber light insulated structural bunker boots with lug sole. The stainless steel, puncture-resisting bottom plate provides a barrier between your feet and whatever you have to walk over to contain the fire. Experience added safety in the form of an oversized steel toe. And we haven't forgotten about your comfort, either. The 3.5mm polyester needled felt liner with heel reinforcement cradles your foot while your body fights the flames. Work on ladders without discomfort thanks to cushioned shin guards. Vulcanized construction guarantees a durable, shock-absorbing fit that won't melt or degrade in extreme heat or cold. Removable superknit-covered polyurethane insole absorbs shocks so you can stand against the flames in these NFPA boots for as long as it takes to contain the blaze.

- Flame-/heat-resisting rubber
- Waterproof
- Removable Superknit covered, polyurethane footbed
- Steel Triple-Rib Ladder shank
- Stainless steel puncture-resisting bottom plate
- Hellfire™ traction lug sole
- Abrasion-resisting rubber T-toe
- Vulcanized construction
- Certified to meet NFPA 1971 structural and NFPA 1992 liquid splash

Available in whole and half sizes in 3 widths to ensure proper fit and comfort.



STYLE #	SLIP-RESISTING	WATERPROOF	PUNCTURE-RESISTING	BLOOD-BORNE PATHOGENS	EH/SD	TOE PROTECTION	STRUCTURAL & HAZMAT	SIZES:	N	M	W	XW
807-6003	✓	💧	✓	🔴	EH	Steel [75]	✓	MEN'S		5-16	5-16	5-16
507-6003	✓	💧	✓	🔴	EH	Steel [75]	✓	WOMEN'S	5-10	5-10	5-10	

INSULATED RUBBER BOOTS

EMS/WILDLAND BOOTS

EMS/WILDLAND BOOTS



EMS/WILDLAND BOOTS

Station 1 9" Leather Boot



These hard-working boots never clock-out, even if your shift turns into a double. Our exclusive Vibram® ATS (All-Terrain Sole) provides exceptional traction on any surface. GORE® CROSSTECH® triple layer moisture barrier is the toughest in the industry. Safety features include a flexible Lenzi L-Protection puncture-resistant insole, triple-rib ladder shank and composite safety toe. These station boots are certified to meet EMS and Wildland firefighting standards for the person who has to be prepared for everything.

- GORE® CROSSTECH® Waterproof Lining
- Full-Grain, Flame/Cut-Resisting Leather
- Steel Triple-Rib Logger Shank
- Exclusive Vibram® ATS Outsole
- Cement Construction
- Certified to meet NFPA 1999 EMS and NFPA 1977 Wildland

Not designed for NFPA 1971 structural fire fighting.

**GORE®
CROSSTECH®**
PRODUCTS



STYLE #	SLIP-RESISTING	WATERPROOF	PUNCTURE-RESISTING	BLOOD-BORNE PATHOGENS	EH/SD	TOE PROTECTION	WILDLAND	SIZES:	N	M	W	XW
804-6379	✓	💧	✓	🩸	EH	Comp [75]	✓	MEN'S	5-14, 15	5-14, 15	5-14, 15	
504-6379	✓	💧	✓	🩸	EH	Comp [75]	✓	WOMEN'S	5-10	5-10	5-10	

VENTILATED COLLAR WITH CLIMATE CONTROL allows the boot to breathe

AGGRESSIVE, SLIP-RESISTING VIBRAM® FIRE & ICE ATS OUTSOLE WITH LADDER GRIPS keeps your feet firmly planted in any conditions

REPLACEMENT ZIPPER:
884-6641 | SIZES:
5-10½
884-6642 | SIZES:
11-15

GORE CROSSTECH TRIPLE-LAYER WATERPROOF LINING is blood-borne pathogen resistant

LIGHTWEIGHT COMPOSITE SAFETY TOE



CALL 1.800.421.2926

EMS/WILDLAND BOOTS

MADE IN AMERICA

MADE IN AMERICA



U.S.A. Oblique 14'' Leather Boot

Step up to danger with confidence in these Made in the U.S.A. leather structural bunker boots with a roomier, more comfortable oblique toe. The StedAir® PTFE waterproof, breathable membrane keeps dangerous fluids out when you wade into hazardous situations. Our exclusive Vibram® Fire & Ice chiseled edge sole with chiseled edge lugs provides exceptional traction on any surface. It stands up to the heat and will help keep a steady foot when fighting winter fires and the water turns to ice. The Aztec lining wicks away moisture, while the removable contoured cushion insole maintains comfort no matter how long you're on your feet. A steel triple-rib ladder shank and Lenzi L-Protection® puncture-resisting insole provides a barrier between your feet and whatever you have to walk over or climb to put out the fire. These NFPA boots are built to work as hard as you do, for as long as you do.

- Full-grain, flame-/abrasion-resisting leather/Vibram® rubber toe and heel bumper
- Removable Dual-density polyurethane footbed
- Lenzi L-Protection® flexible, non-metallic, puncture-resisting insole
- Steel Triple-rib Ladder shank
- Exclusive Vibram® Chiseled Edge Fire and Ice sole
- Goodyear Storm Welt construction
- Certified to meet NFPA 1971
- Certified to meet ASTM F2413-11

MADE IN THE
USA

STEDAIR®
MOISTURE BARRIERS

SOLE 3

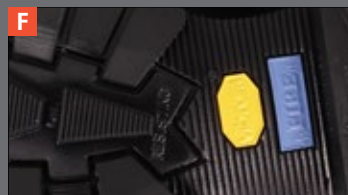
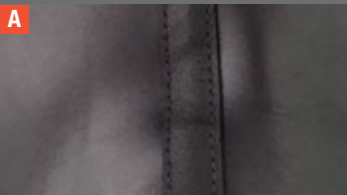


STYLE #	SLIP-RESISTING	WATERPROOF	PUNCTURE-RESISTING	BLOOD-BORNE PATHOGENS	EH/SD	TOE PROTECTION	WILDLAND	SIZES:	N	M	W	XW
804-6379	✓	💧	✓	🩸	EH	Comp [75]	✓	MEN'S		5-16	5-16	5-16
504-6379	✓	💧	✓	🩸	EH	Comp [75]	✓	WOMEN'S	5-10	5-10	5-10	

TECHNICAL FEATURES

Structural
CERTIFIED
NFPA 1971

STEDAIR®
MOISTURE BARRIERS



- A. Heat-Resisting KEVLAR® thread
- B. AZTEC Lining
- C. StedAir® Waterproof Blood-Borne Pathogen Barrier
- D. Scuff-Resisting Vibram Rubber Toe
- E. Steel Triple Ladder Shank
- F. Vibram® Chiseled-Edge Fire and Ice Sole



DOWN TO THE SOLE



DOWN TO THE DETAILS

KEY

- A = BEST
- B = BETTER
- C = GOOD



FIRE SOLES

SOLE 1	SOLE 2	SOLE 3	SOLE 4
--------	--------	--------	--------



	VIBRAM® ATS FIRE & ICE SOLE	TRACTION FLEX SOLE	EXCLUSIVE VIBRAM® CHISELED EDGE FIRE & ICE SOLE	HELLFIRE™ TRACTION LUG
--	-----------------------------------	--------------------------	---	------------------------------

Abrasion Resistance	A	A	A	A
Oil Resistance	A	A	A	C
Heat Resistance	A	A	A	A
Chip Resistance	A	A	A	A
Slip Resistance	A	A	A	A



For Women's size, order Men's size below it on chart. (example: Women's 8, order Men's 6)

Women's	5	5½	6	6½	7	7½	8	8½	9	9½	10	10½	11	11½	12										
Men's	3	3½	4	4½	5	5½	6	6½	7	7½	8	8½	9	9½	10	10½	11	11½	12	13	14	15			



7200 POE AVENUE, SUITE 400
DAYTON, OHIO 45414 | 800.421.2926
www.lionprotects.com

Put LION's high-performance fire boots to work for you. Check us out at your local LION dealer:



GET SOCIAL WITH US:



FACEBOOK facebook.com/lionconnects
INSTAGRAM instagram.com/lion_firegear
TWITTER twitter.com/lion_gear
PINTEREST pinterest.com/lionfiregear
YOUTUBE youtube.com/lionconnects