

# AMKUS®

STRONG TOOLS FOR STRONG WORK



RESCUE SYSTEMS

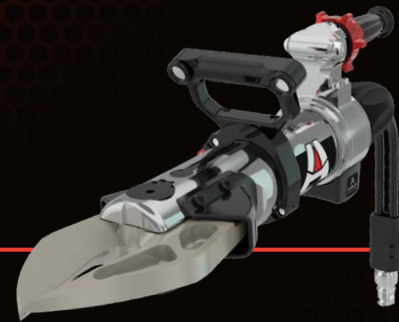
PRODUCT CATALOG  
2020



Fire Rescue teams at the race track and on the city streets demand rugged and dependable tools. AMKUS offers a family of high performance battery powered and line extrication tools. The tools' bodies are constructed from solid aluminum and are ready for service in the severe duty challenging first responders.

# HIGH PERFORMANCE BATTERY AND LINE POWERED TOOLS

The AMKUS ION® family of battery powered tools utilize the DEWALT® FLEXVOLT™ battery platform. It is the only battery that automatically changes voltages when you change tools, so you can share batteries between ION tools and other fire-rescue tools like lights, saws, and drills. The AMKUS LINE tools deliver power, balance and a size that still allows access to even the tightest spaces.



## ION®

### A Family of Tools

The battery powered ION tools are all-aluminum and ready for severe duty. The tools are available in multiple sizes and speeds, yet all share a balanced design for easy tool handling. Though powerful, the tools are compact so they can access the tight spots found in crash scenes and they take up less room on the apparatus.

### Share the Power

AMKUS ION tools utilize a complete DEWALT® system that includes battery, motor, and intelligent electronics to deliver maximum power and life. The FLEXVOLT™ battery operates the ION tools at 60 Volts and automatically changes to 20 Volts when paired with other tools like saws and drills. In addition, the batteries are accessible from hundreds of outlets and are substantially more affordable than proprietary battery systems.

## LINE

### Innovative Designs

Long recognized as leaders in power and rugged tool durability, AMKUS offers a wide range of hydraulic LINE tools. Their design begins with an extraordinarily balanced tool that provides operator comfort and safety. In addition, innovative blade designs and spreader accessories allow first responders quicker and safer rescues.

### Multiple Power Options

AMKUS offers a wide range of power units for its LINE tools. Choose from Briggs & Stratton or Honda engines in multiple sizes on portable units. For a truck mounted power unit, select the 240SS Super Simo which allows for two tool simultaneous operation with only a 15kW generator.

## STRUTS

RESCUESTRUT is a telescoping and hydraulic strut system that's easy to deploy and use for vehicle stabilization, structural collapse and more. The tools are fully assembled and include a single pin adjustment for rapid deployment. A wide variety of strut heads are available that work across the entire strut family.

## TABLE OF CONTENTS

<b>ION® Battery Powered Rescue Tools</b> .....	<b>4 - 7</b>
<b>AMKUS FLEXVOLT™ Fire-Rescue Kits</b> .....	<b>8 - 11</b>
<b>LINE Rescue Tools</b> .....	<b>12 - 16</b>
<b>Reels, Hose and Accessories</b> .....	<b>17 - 18</b>
<b>Power Units</b> .....	<b>19 - 21</b>
<b>RescueStrut System</b> .....	<b>22 - 26</b>
<b>AMKUS Star Award and Service Support</b> .....	<b>27</b>



**AMKUS.com**





# BATTERY



**iC750**



**iCT716**



**iS320**

# AMKUS INNOVATION

Compact, all-metal bodies designed to access tight spaces and require less room on the apparatus

4-stage pumps provide amazing speed under both loaded and unloaded conditions

DeWALT FLEXVOLT battery powered so batteries can be shared with other fire-rescue tools like saws, lights and drills

Center positioning of the battery offers better protection

High Intensity LED lights located in the handle for increased visibility

Location of the controls offers superior operator control

Status LEDs offer user feedback on the tool status



**iS320**

## iC750 CUTTER

- Blade and center bolt design allow access to the difficult cuts
- Rotating handle allows tool to be repositioned with minimal effort

## iCT716 COMBI TOOL

- Removable tips make this “first on scene” tool a great option
- Useful to spread, cut, and “pop” doors

## SHARE THE POWER



### Windshield Removal Kit

Designed to minimize dust during cutting, the windshield cutter is a quick and easy way to remove laminated glass from vehicles.

SEE ALL 11 AMKUS FLEXVOLT™ FIRE-RESCUE KITS ON PAGES 8-11

**AMKUS ION rescue tools can share their powerful FLEXVOLT battery with many DeWALT tools.**

## iS320 SPREADER

- A powerful multi-use spreader with AMKUS Gator Tips for a reliable grip that won't rip sheet metal
- Extended Reach Tips (ERT) increase the spread an additional 8" without significant loss of power
- Gator Tips and ERT's utilize a push button release, so they're easy to install or remove, even with gloved hands

ION Cutter iC750	
Length	33.7 inches (857 mm)
Width	8.7 inches (222 mm)
Height	11.9 inches (302 mm)
Weight (excl. battery)	55 lbs (25 kg)
Cutter Opening	7.0 inches (177.8 mm)
Cutter Rating	A7/B9/C7/D9/E9
Battery	DeWALT FLEXVOLT
Battery Voltage	60V

ION Combi Tool iCT716	
Length with Spreading Tips	36.1 inches (917 mm)
Length without Spreading Tips	34.8 inches (885 mm)
Width	8.7 inches (222 mm)
Height	11.6 inches (295 mm)
Weight (excl. battery with Spreading Tips)	59.5 lbs (27 kg)
Weight (excl. battery without Spreading Tips)	55.4 lbs (25.1 kg)
Max Spreading Distance	15.8 inches (401 mm)
Highest Spreading Force (HSF)	8,260 lbs (36.7 kN)
Lowest Spreading Force (LSF)	6,620 lbs (29.4 kN)
Max Spreading Force	320,000 lbs (1,423 kN)
Cutter Opening	9.1 inches (231 mm)
Battery	DeWALT FLEXVOLT
Battery Voltage	60V

ION Spreader iS320	
Length	38 inches (966 mm)
Width	11.1 inches (282 mm)
Height	11.9 inches (302 mm)
Weight (excl. battery)	54.5 lbs (24.7 kg)
Max Spreading Distance	32 inches (812 mm)
Max Spreading Distance (with optional ERT tips)	39.1 inches (993 mm)
Highest Spreading Force (HSF)	14,750 lbs (65.6 kN)
Lowest Spreading Force (LSF)	10,000 lbs (44.5 kN)
Max Spreading Force	39,500 lbs (175.7 kN)
Highest Pulling Force (HPF)	11,500 lbs (51.1 kN)
Lowest Pulling Force (LPF)	7,500 lbs (33.4 kN)
Battery	DeWALT FLEXVOLT
Battery Voltage	60V



# BATTERY

**ion**  
Battery Powered Tools



**iC550**

**iS280**

**iCT516**

# AMKUS INNOVATION

Compact, all-metal bodies designed to access tight spaces and require less room on the apparatus

DeWALT FLEXVOLT battery powered so batteries can be shared with other fire-rescue tools like saws, lights and drills

High Intensity LED lights located in the handle for increased visibility (standard on cutter and combi)

UL Certified NFPA 1936 Compliant – 100% tested as a battery tool

## iC550 CUTTER

- Blade and center bolt design allow access to the difficult cuts
- Rotating handle allows tool to be repositioned with minimal effort

- Extended Reach Tips (ERT) increase the spread an additional 8" without significant loss of power
- Gator Tips and ERT's utilize a push button release, so they're easy to install or remove, even with gloved hands

## iS240 & iS280 SPREADERS

- 24" and 28" Spreaders are compact, yet powerful



**iTR230**

## iCT516 COMBI TOOL

- A versatile tool for engines, rescue trucks, or ambulances
- Rotating handle allows tool to be repositioned with minimal effort

## iTR230 RAM

- Highest pushing force available in a battery powered ram
- Extensions available for a maximum extended length of 50"

ION Cutter iC550 NFPA 1936 Compliant	
Length	30.6 inches (777 mm)
Width	9.5 inches (241 mm)
Height	9.5 inches (241 mm)
Weight (excl. battery)	45.9 lbs (20.8 kg)
Cutter Opening	5.8 inches (147 mm)
Cutter Rating	A6/B5/C6/D7/E7
Battery	DeWALT FLEXVOLT
Battery Voltage	60V

ION 24" Spreader iS240 NFPA 1936 Compliant			ION 28" Spreader iS280 NFPA 1936 Compliant		
Length	31.2 inches (793 mm)	32.9 inches (836 mm)	Length	31.2 inches (793 mm)	32.9 inches (836 mm)
Width	11.1 inches (282 mm)	11.1 inches (282 mm)	Width	11.1 inches (282 mm)	11.1 inches (282 mm)
Height	9.6 inches (244 mm)	9.6 inches (244 mm)	Height	9.6 inches (244 mm)	9.6 inches (244 mm)
Weight (excl. battery)	48.7 lbs (22.1 kg)	50.5 lbs (22.9 kg)	Weight (excl. battery)	48.7 lbs (22.1 kg)	50.5 lbs (22.9 kg)
Weight (excl. battery) with Optional Lighted Handle	49.1 lbs (22.3 kg)	50.7 lbs (23.0 kg)	Weight (excl. battery) with Optional Lighted Handle	49.1 lbs (22.3 kg)	50.7 lbs (23.0 kg)
Max Spreading Distance	24.5 inches (622 mm)	28 inches (711 mm)	Max Spreading Distance	24.5 inches (622 mm)	28 inches (711 mm)
Max Spreading Distance (with optional ERT tips)	32 inches (813 mm)	36 inches (914 mm)	Max Spreading Distance (with optional ERT tips)	32 inches (813 mm)	36 inches (914 mm)
Highest Spreading Force (HSF)	13,620 lbs (60.6 kN)	12,720 lbs (56.6 kN)	Highest Spreading Force (HSF)	13,620 lbs (60.6 kN)	12,720 lbs (56.6 kN)
Lowest Spreading Force (LSF)	7,410 lbs (32.9 kN)	6,610 lbs (29.4 kN)	Lowest Spreading Force (LSF)	7,410 lbs (32.9 kN)	6,610 lbs (29.4 kN)
Max Spreading Force	39,120 lbs (174.0 kN)	31,940 lbs (142.1 kN)	Max Spreading Force	39,120 lbs (174.0 kN)	31,940 lbs (142.1 kN)
Highest Pulling Force (HPF)	10,350 lbs (46.0 kN)	9,590 lbs (42.7 kN)	Highest Pulling Force (HPF)	10,350 lbs (46.0 kN)	9,590 lbs (42.7 kN)
Lowest Pulling Force (LPF)	5,850 lbs (26.0 kN)	4,960 lbs (22.1 kN)	Lowest Pulling Force (LPF)	5,850 lbs (26.0 kN)	4,960 lbs (22.1 kN)
Battery	DeWALT FLEXVOLT	DeWALT FLEXVOLT	Battery	DeWALT FLEXVOLT	DeWALT FLEXVOLT
Battery Voltage	60V	60V	Battery Voltage	60V	60V

ION Combi Tool iCT516 NFPA 1936 Compliant	
Length	33.9 inches (861 mm)
Width	9.5 inches (241 mm)
Height	9.5 inches (241 mm)
Weight (excl. battery)	48.7 lbs (22.1 kg)
Max Spreading Distance	15.5 inches (394 mm)
Highest Spreading Force (HSF)	8,920 lbs (39.7 kN)
Lowest Spreading Force (LSF)	6,650 lbs (29.6 kN)
Max Spreading Force	153,870 lbs (684.0 kN)
Cutter Opening	7.3 inches (185 mm)
Battery	DeWALT FLEXVOLT
Cutter Rating	A6/B7/C6/D7/E7
Battery Voltage	60V

ION Ram iTR230 NFPA 1936 Compliant	
Length	17.8 inches (452 mm)
Width	7.3 inches (185 mm)
Height	11.4 inches (290 mm)
Weight (excl. battery)	37.5 lbs (17.0 kg)
Length Retracted	11.4 inches (290 mm)
Length Extended	22.6 inches (574 mm)
Stroke: Piston 1	6.3 inches (160 mm)
Stroke: Piston 2	4.9 inches (124 mm)
Stroke: Overall	11.2 inches (284 mm)
Extensions Lengths Available	10, 18 and 27 inch (254, 457 and 686 mm)
Max Extended Length with Extensions	49.6 inches (1260 mm)
Highest Spreading Force (HSF) Piston 1	48,360 lbs (215.1 kN)
Lowest Spreading Force (LSF) Piston 2	17,170 lbs (76.4 kN)
Battery	DeWALT FLEXVOLT
Battery Voltage	60V

## SHARE THE POWER



### 9 Inch Cut Off Saw Kit

FLEXVOLT powered cut-off saw makes cuts up to 3-1/4 inch deep. Make fast and efficient single pass cuts and scores in concrete, steel, and rebar.

SEE ALL 11 AMKUS FLEXVOLT™ FIRE-RESCUE KITS ON PAGES 8-11

AMKUS ION rescue tools can share their powerful FLEXVOLT battery with many DeWALT tools.



# SHARE THE POWER

**ion**  
Battery Powered Tools



DEWALT®  
Windshield  
Cutter



AMKUS  
ION iC550  
Cutter

## AMKUS® FLEXVOLT™ FIRE RESCUE KITS

Standardize on AMKUS ION rescue tools and you can share their powerful FLEXVOLT battery with over 200 other DeWALT tools. The FLEXVOLT battery that operates ION tools will also power both 60 Volt and 20 Volt DeWALT tools. It is the only battery that automatically changes voltages when you change tools. AMKUS has created kits using DeWALT tools that are perfect solutions for fire rescue applications. AMKUS is an authorized DeWALT reseller so you can be sure you'll receive the right products and accessories and the support you need.



#WNDREM-KIT

### WINDSHIELD REMOVAL KIT

The AMKUS windshield removal kit is designed to minimize dust during cutting, the windshield cutter is a quick and easy way to remove laminated glass from vehicles. #WNDREM-KIT includes (1) Windshield Cutter, (1) FuBar Tool, (2) Windshield Suction Cups, (1) FLEXVOLT 60V/20V Battery (2AH/6AH), (1) Charger, and (1) Bag.



#RECSAW-KIT

### RECIPROCATING SAW KIT

When paired with the included reciprocating saw blades, this tool makes quick work of structural steel as well as sheet metal and perfectly complements your AMKUS rescue tools. The saw's keyless lever-action blade clamp allows for quick and easy blade changes while its LED light helps to illuminate your work area. #RECSAW-KIT includes (1) Reciprocating Saw, (10) 6" Lennox Laser CT Extrication Blades, (10) 9" Lennox Laser CT Extrication Blades, (1) FLEXVOLT 60V/20V Battery (2AH/6AH), (1) Charger, and (1) Storage Bag.



#CUTSAW-KIT

### 9" CUT OFF SAW KIT

The 9" cut off saw kit makes cuts up to 3-1/4" deep. Make fast and efficient single pass cuts and scores in concrete, steel, and rebar. The saw features a front handle that can be held in three positions, allowing the saw to be used to cut in both horizontal and vertical positions. #CUTSAW-KIT includes (1) 9" Cut Off Saw, (1) Diamond Wheel, (1) Ceramic Cut Off Wheel, (1) FLEXVOLT 60V/20V Battery (2AH/6AH), and (1) Charger.



#CUTSAW2-KIT

### 9" CUT OFF SAW KIT (2 BATT, CUT OFF WHEEL, AND 9" DIAMOND RESCUE BLADE)

The 9" cut off saw kit makes cuts up to 3-1/4" deep. Make fast and efficient single pass cuts and scores in concrete, steel, and rebar. The saw features a front handle that can be held in three positions, allowing the saw to be used to cut in both horizontal and vertical positions. #CUTSAW2-KIT includes (1) 9" Cut Off Saw, (1) 9" Diamond Rescue Blade, (1) Diamond Wheel, (1) Ceramic Cut Off Wheel, (2) FLEXVOLT 60V/20V Batteries (3AH/9AH), and (1) Charger.



### CHAINSAW KIT

This 60V chainsaw kit is a versatile tool in the fire service with many different applications including forcible entry, roof ventilation, rescue operations, clearing fire lines and clearing roadways of fallen trees and debris. The 60V brushless chainsaw features a chain brake for kick back protection and provides up to 70 cuts per charge on a 6" x 6" pressure treated pine wood with the included 60V Max 3Ah battery. #CHNSAW-KIT includes (1) 60V Brushless Chainsaw, (1) FLEXVOLT 60V/20V Battery (3AH/9AH), and (1) Charger.



CHNSAW-KIT



CIRCSAW-KIT

### 60V CORDLESS CIRCULAR SAW KIT

This 7-1/4" circular saw with electric brake has a no-load speed of 5800 RPM and delivers the power of a corded circular saw with the portability and convenience of cordless. #CIRCSAW-KIT includes (1) Circular Saw, (1) FLEXVOLT 60V/20V Battery (2AH/6AH), (1) Charger, and (1) Bag.



BLOWER-KIT

### HANDHELD BLOWER KIT

Designed to withstand everyday heavy-duty usage this FLEXVOLT powered blower is ideal for debris cleanup from MVA scenes and creating firebreaks. Powers through debris at up to 423 CFM of air volume at 129 MPH. Flat concentrator nozzle increases air speeds to 175 MPH. It features a variable speed trigger and speed lock for total power control, and its lightweight and ergonomic design maximizes control and minimizes fatigue. #BLOWER-KIT includes (1) Handheld Blower, (1) FLEXVOLT 60V/20V Battery (2AH/6AH), and (1) Charger.



DRILL-KIT

### HAMMER AND IMPACT DRIVER KIT

The 20V MAX XR hammer drill/driver and impact driver both feature brushless motors that delivers up to 57% more runtime than brushed motors. #DRILL-KIT includes (1) Drill, (1) Impact Driver, (1) FLEXVOLT 60V/20V Battery (2AH/6AH), (1) DeWALT 20V Max 2.0AH Battery, (1) Charger, and (1) Bag.



SCNLGHT-KIT

### SCENE LIGHTING KIT

The scene lighting kit's compact design takes up minimal compartment space and can be deployed at a scene in seconds. Integrated carry handle provides easy portability to the scene. Light head can be rotated and telescopes to 7 feet to reduce shadows and glare. Variable brightness settings up to 3000 lumens. Light will operate for over 11 hours on low brightness setting. IP54 rating for weather and dust resistance. #SCNLGHT-KIT includes (1) Rechargeable Scene Light, (1) FLEXVOLT 60V/20V Battery (2AH/6AH), and (1) Charger.



GRINDER-KIT

### 60V GRINDER KIT WITH DIAMOND RESCUE BLADE

The 4.5"-6" grinder with kickback brake is maximized for power and durability. It delivers 13-amp power with the portability and convenience of cordless through revolutionary FLEXVOLT technology. #GRINDER-KIT includes (1) 60V Grinder, (1) 4.5" Diamond Rescue Blade, (1) 4.5" x 1/4" bonded abrasive wheel, (1) FLEXVOLT 60V/20V Battery (2AH/6AH), (1) Charger, and (1) Bag.



BANDSAW-KIT

### PORTABLE BAND SAW KIT

This portable, brushless band saw kit has great power and runtime. It can cut up to 5" x 4-3/4" rectangular and up to 4" round material. It also includes blade speed control, integrated hang hook, and a durable base. #BANDSAW-KIT includes (1) Band Saw, (1) FLEXVOLT 60V/20V Battery (2AH/6AH), and (1) Charger.



# LINE TOOLS



## AMKUS INNOVATION

Compact, all-metal bodies designed to access tight spaces and require less room on the apparatus

Location of the controls offers superior operator control

High Intensity LED lights located in the handle for increased visibility (standard on cutter, spreader, and combi)

Available with standard or mono coupling

### C750 CUTTER

- Blade and center bolt design allow access to the difficult cuts
- Rotating handle allows tool to be repositioned with minimal effort

### CT716 COMBI TOOL

- Removable tips make this “first on scene” tool a great option
- Useful to spread, cut and, “pop” doors

### S320 SPREADER

- A powerful multi-use spreader with AMKUS Gator Tips for a reliable grip that won't rip sheet metal
- Extended Reach Tips (ERT) increase the spread an additional 8” without significant loss of power
- Gator Tips and ERT's utilize a push button release, so they're easy to install or remove, even with gloved hands



Cutter C750	
Length	32.6 inches (827 mm)
Width	8.7 inches (222 mm)
Height	10.2 inches (259 mm)
Weight	46 lbs (20.9 kg)
Cutter Opening	7.0 inches (177.8 mm)
Cutter Rating	A7/B9/C7/D9/E9
Rated Input Pressure	10,500 psi (724 bar)

Combi Tool CT716	
Length with Spreading Tips	34.9 inches (887 mm)
Length without Spreading Tips	33.7 inches (855 mm)
Width	8.7 inches (222 mm)
Height	10.2 inches (259 mm)
Weight (with Spreading Tips)	48.9 lbs (22.2 kg)
Weight (without Spreading Tips)	44.8 lbs (20.3 kg)
Max Spreading Distance	15.8 inches (401 mm)
Highest Spreading Force (HSF)	8,260 lbs (36.7 kN)
Lowest Spreading Force (LSF)	6,620 lbs (29.4 kN)
Max Spreading Force	320,000 lbs (1,423 kN)
Cutter Opening	9.1 inches (231 mm)
Rated Input Pressure	10,500 psi (724 bar)

Spreader S320	
Length	36.8 inches (935 mm)
Width	11.1 inches (282 mm)
Height	10.2 inches (259 mm)
Weight	45.9 lbs (20.8 kg)
Max Spreading Distance	32 inches (812 mm)
Max Spreading Distance (with optional ERT tips)	39.1 inches (993 mm)
Highest Spreading Force (HSF)	14,750 lbs (65.6 kN)
Lowest Spreading Force (LSF)	10,000 lbs (44.5 kN)
Max Spreading Force	39,500 lbs (175.7 kN)
Highest Pulling Force (HPF)	11,500 lbs (51.1 kN)
Lowest Pulling Force (LPF)	7,500 lbs (33.4 kN)
Rated Input Pressure	10,500 psi (724 bar)



# CUTTERS

## AMK-21A CUTTER

- 360-degree rotating handle allows rescuer to place the handle in the best position for the desired cutting action
  - Optional lighted handle adds 2 powerful LEDs that help illuminate the working area
  - Control valve placement provides compact design, allowing greater access for the user
  - Tool design provides excellent balance and natural hand placement
  - Powerful enough to cut Boron and other ultra-high strength steels
  - Anodized for corrosion protection
- Shown with optional lighted handle.*



AMK-21A

## AMK-22 CUTTER

- 360-degree rotating handle with eight lockable positions allows rescuer to place the handle in the best position for the desired cutting action
  - Optional lighted handle adds 2 powerful LEDs that help illuminate the working area
  - Control valve placement provides compact design, allowing greater access for the user
  - Tool design provides excellent balance and natural hand placement
  - Powerful enough to cut Boron and other ultra-high strength steels
  - Anodized for corrosion protection
- Shown with optional lighted handle.*



AMK-22

## AMK-25 HEAVY DUTY CUTTER

- Extremely compact and versatile with plenty of cutting power
- The lightest cutter in its class weighing only 30.1 lbs (ready to use)
- Proven design - thousands in use worldwide
- Anodized for corrosion protection
- Available with D-ring handle
- Available with standard or mono coupling



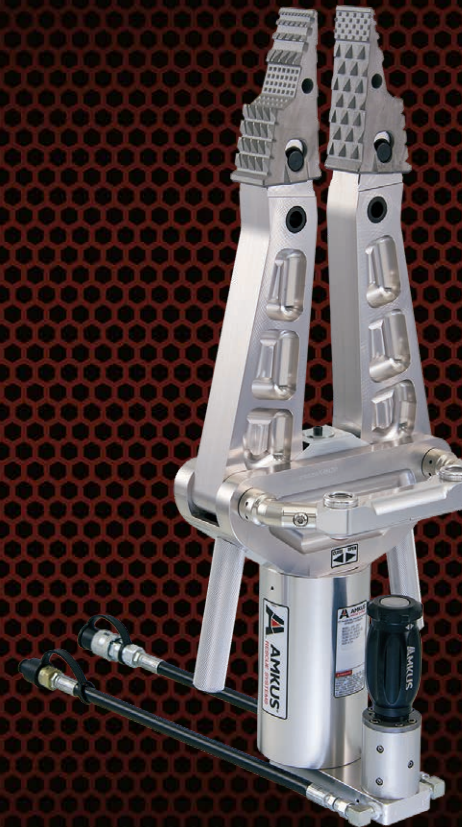
AMK-25

AMK-25 Heavy Duty Cutter	
Length	20.5 inches (521 mm)
Width	9.0 inches (229 mm)
Depth	7.6 inches (193 mm)
Weight (ready-to-use)	30.1 lbs ( 13.7 kg)
Max cutter opening at tips	4.1 inches (104 mm)
Max Cutter Opening at Center	5.0 inches (127mm)
Max Cutting Force	60,000 lbs. (266.9 kN)
Rated Input Pressure	10,500 psi (724 bar)

# SPREADERS / COMBI

## AMK-30CRT SPREADER

- Unique design allows maximum usable force
  - Push button pins for easy removal of tips (eliminates possibility of losing pins in the field)
  - Removable tips accept chain package and optional tips for versatility
  - Available with standard or mono coupling
  - Equipped with our aggressive Gator Pins
- Shown with optional lighted handle*



AMK-30CRT

AMK-30 CRT Spreader	
Max Spreader Opening	32.0 inches (813 mm)
Length	30.1 inches (765 mm)
Width	12.0 inches (305 mm)
Height	8.2 inches (208 mm)
Weight (ready-to-use)	48.0 lbs ( 21.75 kg)
Max Spreader Force (measured at 30.2 in. (767mm) spreader tip opening)	17,775 lbs (79.1 kN)
Rated Input Pressure	10,500 psi (724 bar)

## AMK-24 SPREADER

- Unique design allows maximum usable force
  - Removable tips accept chain package and optional tips for versatility
  - Push button pins for easy removal of tips (eliminates possibility of losing pins in the field)
  - Control valve placement provides compact design allows greater access for the user
  - Excellent balance and natural hand placement
  - Anodized for corrosion protection
- Shown with standard Gator Tips*



AMK-24

AMK-24 Spreader  NFPA 1936 & EN13204 Compliant	
Max Spreader Opening	24.0 inches (610 mm)
Max Spreader Travel Distance	23.9 inches (607 mm)
Length	29.7 inches (754 mm)
Width	14.0 inches (356 mm)
Depth	8.0 inches (203 mm)
Weight (ready-to-use)	37.35 lbs (17.0 kg)
Highest Spreading Force (NFPA 1936, HSF)	10,100 lbs (44.8 kN)
Lowest Spreading Force (NFPA 1936, LSF)	9,145 lbs (40.6 kN)
Highest Pulling Force (NFPA 1936, HPF)	6,218 lbs (27.6 kN)
Lowest Pulling Force (NFPA 1936, LPF)	5,450 lbs (24.2 kN)
Maximum Spreading Force (at back of tips)	18,785 lbs (83.5 kN)
Spreader Opening Time	4 seconds
Spreader Closing Time	4 seconds
Rated Input Pressure	10,500 psi (724 bar)

## AMK-25C COMBI TOOL

- Combination cutting/spreading/pulling tool
- Extremely lightweight, compact size for easy storage
- Ideal for "first response" applications
- Anodized for corrosion protection
- Check valve design maintains load
- Available with D-ring handle
- Available with standard or mono coupling



AMK-25C

AMK-25C Combi Tool	
Length	25.0 inches (635 mm)
Width	8.0 inches (203 mm)
Height	7.5 inches (190 mm)
Weight (ready-to-use)	36.0 lbs (16.4 kg)
Max Cutting Edge Opening	7.0 inches (178 mm)
Max Cutting Force	57,000 lbs (253.5 kN)
Max Spreading Distance	15.5 inches (394 mm)
Max Spreading Force at Tips	9,900 lbs (44.0 kN)
Rated Input Pressure	10,500 psi (724 bar)



# RAMS

## AMK-100R LIFTING JACK

- Single-stage lifting jack
- Enormous lifting force in a compact package
- Remote actuating valve allows operation from a safe distance
- Supplied with 1", 2" and 3" shim plates for longer stroke applications

## PUSH/PULL RAMS

- Unique base design distributes load
- Check valve design maintains load
- Accessories available for increased capabilities
- Push/Pull design allows use of standard AMKUS chain packages
- Anodized for corrosion protection
- Available with standard or mono coupling

### Ram Accessory Kit K-RAMACC

Includes ten inch extension and two accessory heads



AMK-100R



AMK-60R



AMK-40R



AMK-30R



AMK-20R

AMK-100R Lifting Jack	
Length Open	16 inches (406 mm)
Length Closed	10 inches (254 mm)
Total Weight	61 lbs (27.7 kg)
- Jack assembly	20 lbs (9 kg)
- Remote Valve Assembly	10 lbs (4.5 kg)
- Shim Plates	23 lbs (10.4 kg)
- 10' Extension Hose	8 lbs (3.6 kg)
Max Pushing Force	100,000 lbs (445 kN)
Rated Input Pressure	10,500 psi (724 bar)

AMK-60R	
Length Open	60.3 inches (1,532 mm)
Length Closed	35.5 inches (902 mm)
Width Overall	8.5 inches (216 mm)
Height	5.0 inches (127 mm)
Weight (ready-to-use)	43.5 lbs. (19.7 kg)
Max Push Force	30,650 lbs (136.3 kN)
Max Pull Force	14,400 lbs ( 64.1 kN)
Rated Input Pressure	10,500 psi (724 bar)

AMK-40R	
Length Open	40.0 inches (1,016 mm)
Length Closed	25.4 inches (645 mm)
Width Overall	8.5 inches (216 mm)
Height	5.0 inches (127 mm)
Weight (ready-to-use)	33.0 lbs (15.0 kg)
Max Push Force	30,650 lbs (136.3 kN)
Max Pull Force	14,400 lbs ( 64.1 kN)
Rated Input Pressure	10,500 psi (724 bar)

AMK-20R	
Length Open	21.0 inches (533 mm)
Length Closed	15.4 inches (391 mm)
Width Overall	12.8 inches (325 mm)
Height	10.0 inches (254 mm)
Weight (ready-to-use)	22.5 lbs (10.2 kg)
Max Push Force	30,650 lbs (136.3 kN)
Max Pull Force	14,400 lbs ( 64.1 kN)
Rated Input Pressure	10,500 psi (724 bar)

AMK-30R	
Length Open	29.1 inches (739 mm)
Length Closed	19.3 inches (490 mm)
Width Overall	8.5 inches (216 mm)
Height	5.0 inches (127 mm)
Weight (ready-to-use)	27.0 lbs (12.2 kg)
Max Push Force	30,650 lbs (136.3 kN)
Max Pull Force	14,400 lbs ( 64.1 kN)
Rated Input Pressure	10,500 psi (724 bar)

# REELS / HOSE

## ELECTRIC REWIND HOSE REELS

- Electric motors can be mounted in a wide variety of positions, saving valuable compartment space
- Reels include rugged aluminum collars on crimps, preventing bending and collapse which make it impossible to pull entire lengths of hose

- Available in 50, 100, 125, 150 or 200 foot lengths of hose
  - All inside drums are reinforced
  - Also available in manual version
- Dimensions are larger for reels longer than 100 feet.*

## HOSE

- TOUGHJACKET™ hose is reinforced with high tensile steel wire braid and its polyurethane cover resists abrasions and tears

- Extension, pump, reel, pump to reel hoses all available in all lengths
- Available with standard or mono couplers
- Will not kink or crimp



AMK-ERR100BM  
Electric Hose Reel Bumper Mount



AMK-ERR100  
Electric Hose Reel



Extension Hose Blue with Mono Couplings Both Ends



Extension Hose Yellow with Standard Couplings Both Ends



Extension Hose Red with Mono Couplings Both Ends



Extension Hose Black with Standard Couplings Both Ends

AMK-ERR100BM	
Depth	17.7 inches (450 mm)
Width	17.3 inches (440 mm)
Height	20.1 inches (512 mm)
Weight	Varies By Application

AMK-ERR100	
Depth	21.0 inches (533 mm)
Width	19.0 inches (483 mm)
Height	21.6 inches (549 mm)
Weight	Varies By Application



# BATTERY & LINE ACCESSORIES



KS0029-KIT

### Extended Reach Tips (ERT) KS0029-KIT (set of tips)

- Accessory for spreader models iS240, AMK-24, iS280 and AMK-30CRT and upgrade available for 30CX
- Increases the spread up to 8 inches and the unique construction eliminates loss of power
- With a built-in push button release, tips are easy to install or remove - even with gloved hands



KS0017G-KIT

### Gator Tips™ KS0017G-KIT (set of tips)

- Aggressive tooth pattern will not slip and beveled edges don't rip sheet metal
- Wide shoulder scoop-out cradles the load and opposing teeth grip with arms wide open
- Standard on ION spreaders, AMK-30CRT and AMK-24 spreaders



KEH016-KIT

### Spreader Lighted Handle KEH016-KIT and KEH017-KIT

- Lighted handles for all ION battery powered spreaders (shown here) are available as an option or upgrade using KEH016-KIT.
- Lighted handles can be quickly and easily upgraded using KEH017-KIT on AMK-30CX and AMK-30CRT hydraulic spreaders.
- Two super-bright battery powered LED lights with three brightness settings
- Made from solid billet aluminum and hardcoat anodized



KEH015-KIT

### Cutter or Combi Lighted Handle KEH015-KIT

- Quickly and easily upgrades existing 360° swiveling handles on AMK-21A and AMK-22 hydraulic cutters.
- Lighted 360° swiveling handles are standard on all ION battery powered cutters and combi tools.
- Two super-bright battery powered LED lights with three brightness settings
- Made from one-piece solid billet aluminum and hardcoat anodized



CHAIN PACKAGES



KV0005-KIT



KHC022



COLOR MONO COUPLER SLEEVES

### Quick Adjust Chain Package

Quick release push button tips with hook. Includes 2 seven foot chains. For use with iS240, iS280, AMK-24 and AMK-30CRT Spreaders

### Standard Chain Package

Includes 2 seven foot chains with U-bolt and hook. For use with AMK-30CX, AMK-28 Spreaders and Rams. Other packages available

### Control Valve Grip KV0005-KIT

- Made from one piece billet aluminum, black hardcoat anodized and laser engraved with the AMKUS logo
- The new shape enhances grip and precise tool control, even with a gloved hand
- Quick and easy conversion of your old control valve

### Super Swivel KHC022

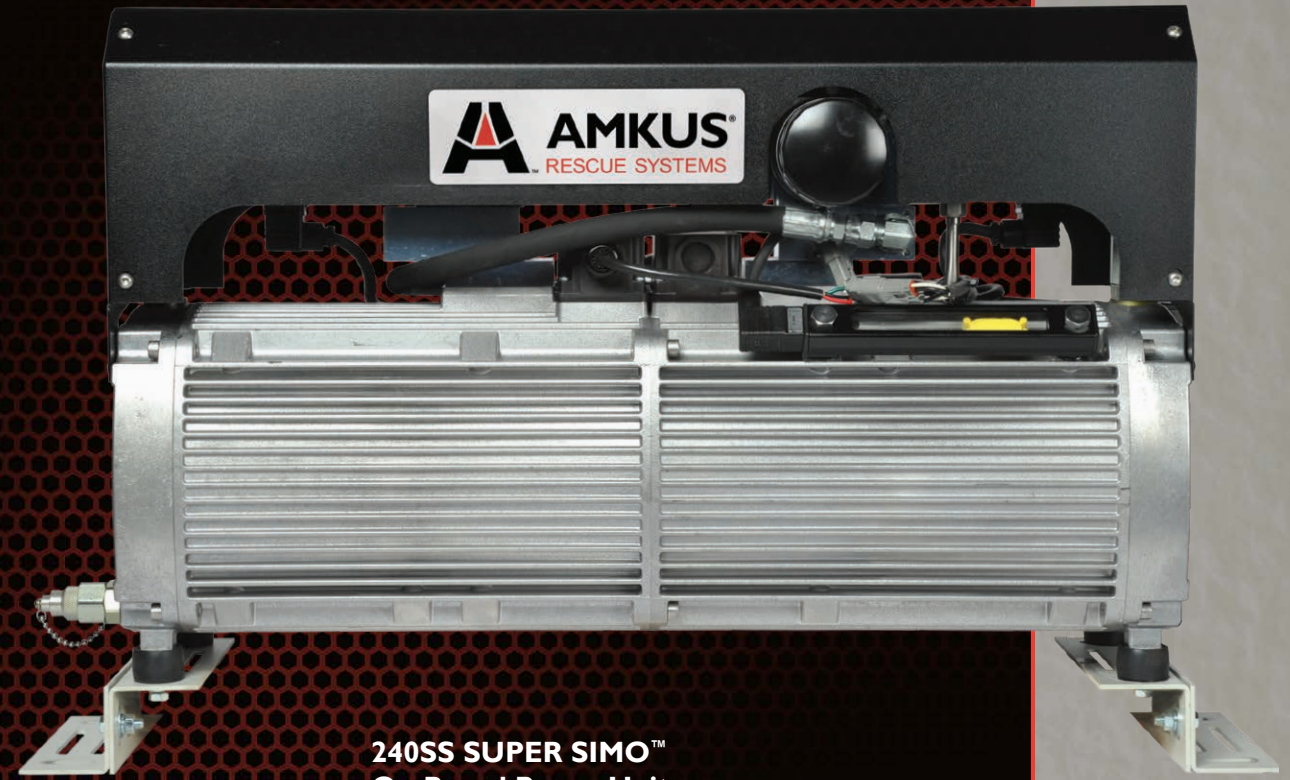
- Allows the hose to be positioned or moved to prevent accidental crushing
- Hose connection can be positioned for vertical mounting when using mono couplings
- Complete maneuverability of hose and use of full length of tool connection hose

### Color Mono Coupler Sleeves

- KHC007YL-KIT (yellow)
- KHC007GN-KIT (green)
- KHC007RD-KIT (red)
- KHC007BL-KIT (blue)
- KHC007GR-KIT (gray)
- KHC007-KIT (black)

- These colored sleeves can be used in identifying hydraulic lines or specific tools – aiding reaction times at deployment and standardizing departmental procedures

# POWER UNITS



### 240SS SUPER SIMO™ On-Board Power Unit

- Requires only 5 amps to startup with virtually no inrush. (Compare to 60 amps inrush on typical simultaneous power units)
- The design of the 240SS reduces the need for accessibility to the pump unit, providing versatility when determining a location for the unit in your apparatus
- Easy and cost effective installation
- Retrofits on existing apparatus are a practical option
- Electric Power Unit, 240 Volt single phase power
- Two tools can be connected and operated simultaneously
- Power Sharing Mode is an available feature which allows a 2 tool system to be used on a 10KW generator by temporarily focusing all the power on a single tool when both tools are operating near maximum pressure.
- Can be used with hose lengths up to 200'
- DC fan-cooled hydraulic heat exchanger
- Complete on-board circuit panel for: individual motor and circuit activation, LED circuit status display, LCD display for operational diagnostics, integrated low oil warning and low oil shut down
- Optional wireless remote control with emergency shut down



240SS Super Simo	
Max Electrical Draw (when both circuits at maximum operating pressure)	13,500 watts
Delivery of Pump, stage 1	1.0 gpm per port x 2 (3785 cc/min)
Delivery of Pump, stage 2	0.68 gpm per port x 2 (2574 cc/min)
Step Down Pressure	6,500 psi (448 bar)
Relief Pressure Setting	10,500 psi (724 bar)
Capacity of Oil Reservoir	7.0 gals. US (operation-al) (26.4 liters)
Power Unit	
Weight	177 lbs dry (80.2 kg) 217 lbs wet (98.4 kg)
Dimensions Vertical Mounted	33H x 10.25W x 21D inches
Dimensions Horizontal Mounted	21H x 10.25W x 33L inches
Motor Control Unit	
Weight	33.75 lbs (15.3 kg)
Dimensions	12H x 20W x 8D inches
Control Console	
Weight	7 lbs (3.1 kg)
Dimensions	8.37H x 8.37W x 9D inches
Heat Exchanger	
Weight	26 lbs (11.8 kg)
Dimensions (with Port Blocks)	16.75H x 15W x 7D inches
Rated Output Pressure	10,500 psi (724 bar)



## GH2B-MCH MINI-SIMO™

- Gasoline powered Honda® engine
- Two tool simultaneous operation
- “BOOST” mode, when in alternate tool operation, increases tool response in both pump stages
- Increased first stage pressure reduces cycle times
- Newly designed 3-position control valves
- Direct mounted standard couplings or single connection mono couplings
- Modular design reduces time required for service



GH2B-MCH



GH2B-MCH Mini-Simo NFPA 1936 Compliant	
Length (with couplings)	17.75 inches (451 mm)
Length (without couplings)	15.50 inches (394 mm)
Width	12.50 inches (318 mm)
Height	18.50 inches (470 mm)
All weights include gas, engine oil, and hydraulic fluid	
Weight (with Standard Couplings)	58.77 lbs (26.66 kg)
Weight (with female Mono Couplings)	58.60 lbs (26.58 kg)
Weight (without couplings)	55.40 lbs (25.13 kg)
Fluid Type	AMKUS MV-1 Mineral Base Hydraulic Fluid
For equipment stored and operated in environments below freezing use AMKUS MV-0 Mineral Base Hydraulic Fluid	
Hydraulic Fluid Reservoir Capacity	0.6 gals. US (2.27 liters)
Delivery of pump, stage 1	0.584 gpm per port x 2 (2212 cc/min)
Delivery of pump, stage 2	0.151 gpm per port x 2 (574 cc/min)
BOOST Mode: Single tool operation only	
Delivery of pump, stage 1	1.168 gpm (4424 cc/min)
Delivery of pump, stage 2	0.32 gpm (1148 cc/min)
Rated Output Pressure	10,500 psi (724 bar)

# POWER UNITS

## EF2S or EF2S-XL POWER UNIT

- Electric powered, 3.0 horsepower, “washdown” motor
- 220/240 Volt single phase
- Two high pressure, two-stage pumping systems
- Two 2-Way, 2-position selector valves
- Two tools can be connected and operated simultaneously



EF2S

EF2S or EF2S-XL SEI NFPA 1936 Compliant	
Length	17.6 inches (447 mm)
Width	12.1 inches (307 mm)
Height	20.0 inches (508 mm)
Weight (ready-to-use)	106.4 lbs (48.0 kg)
Includes hydraulic fluid and couplings.	
Fluid Type	AMKUS MV-1 Mineral Base Hydraulic Fluid
Hydraulic Fluid Reservoir Capacity	2.0 gals US (7.6 liters)
Delivery of pump, stage 1	1.20 gpm (4,542 cc/min)
Delivery of pump, stage 2	0.25 gpm (946 cc/min)
Rated Output Pressure	10,500 psi (724 bar)

## GB2S-XL0 POWER UNIT

- Gasoline powered Briggs & Stratton® overhead valve 4-cycle engine
- Two high pressure, two-stage pumping systems
- Two 2-way, 2-position selector valves
- Two tools can be connected and operated simultaneously
- Roll cage for protection and hose storage



GB2S-XL0

GB2S-XL0 SEI NFPA 1936 & EN13204 Compliant	
Length	23.0 inches (584 mm)
Width	16.0 inches (483 mm)
Width (with one hose loop standard)	19.0 inches (437 mm)
Height	20.5 inches (521 mm)
Weight (ready-to-use)	109.6 lbs (50 kg)
Includes gas, engine oil, hydraulic fluid and couplings.	
Fluid Type	AMKUS MV-1 Mineral Base Hydraulic Fluid
Hydraulic Fluid Reservoir Capacity	2.0 gals US (7.6 liters)
Delivery of pump, stage 1	1.20 gpm per port x 2 (4,542 cc/min)
Delivery of pump, stage 2	0.25 gpm per port x 2 (946 cc/min)
Rated Output Pressure	10,500 psi (724 bar)

## GH2A-MC MINI POWER UNIT

- Gasoline powered 4-cycle Honda® engine
- Easy to fill with large fill port on reservoir
- Includes spark arresting muffler
- Two tools can be connected simultaneously and operated alternately
- High pressure, two-stage pumping system
- Alternate tool operation
- Roll cage for protection
- Easy access drain port to drain hydraulic fluid from pump



GH2A-MC

GH2A-MC SEI NFPA 1936 & EN13204 Compliant	
Length	19.0 inches (482 mm)
Width	17.0 inches (432 mm)
Height	17.8 inches (452 mm)
Weight (ready-to-use)	68.0 lbs (30.8 kg)
Includes gas, engine oil, hydraulic fluid and couplings.	
Fluid Type	AMKUS MV-1 Mineral Base Hydraulic Fluid
Hydraulic Fluid Reservoir Capacity	0.68 gals US (2.57 liters)
Usable Hydraulic Fluid Capacity	0.66 gals US (2.50 liters)
Delivery of pump, stage 1	0.8 gpm (3,028 cc/min)
Delivery of pump, stage 2	0.14 gpm (530 cc/min)
Rated Output Pressure	10,500 psi (724 bar)

## GH2S2-XL POWER UNIT

- Gasoline powered 4-cycle Honda® engine
- Two high pressure, 2-stage pumping systems
- Two tools can be connected and operated simultaneously
- Two 2-way, 2-position selector valves
- Roll cage for protection and hose storage



GH2S2-XL

GH2S2-XL SEI NFPA 1936 & EN13204 Compliant	
Length	23.0 inches (584 mm)
Width	16.0 inches (407 mm)
Width (with one hose loop standard)	19.0 inches (483 mm)
Height	20.5 inches (521 mm)
Weight (ready-to-use)	114.0 lbs (51.7 kg)
Includes gas, engine oil, hydraulic fluid and couplings.	
Fluid Type	AMKUS MV-1 Mineral Base Hydraulic Fluid
Hydraulic Fluid Reservoir Capacity	2.0 gals US (7.6 liters)
Delivery of pump, stage 1	1.20 gpm (4,542 cc/min)
Delivery of pump, stage 2	0.25 gpm (946 cc/min)
Rated Output Pressure	10,500 psi (724 bar)

## HP101-STD BACK UP HAND PUMP



HP101-STD

HP101-STD Foot pump handle available	
Length	27 inches (686 mm)
Width	10.5 inches (267 mm)
Height	8 inches (203 mm)
Weight (ready-to-use)	32.0 lbs (14.5 kg)
Hydraulic Fluid Reservoir Capacity	0.66 gals US (2.5 liters)
Usable Hydraulic Fluid Capacity	0.6 gals US (2.3 liters)
Rated Output Pressure	10,500 psi (724 bar)

HH2S (not pictured)	
Length	14.5 inches (369 mm)
Width	12.8 inches (326 mm)
Height	17.2 inches (437 mm)
Weight (ready-to-use)	86.0 lbs (39 kg)
Includes anti-vibration feet and hydraulic fluid.	
Fluid Type	AMKUS MV-1 Mineral Base Hydraulic Fluid
For equipment stored and operated in environments below freezing use AMKUS MV-0 Mineral Base Hydraulic Fluid	
Hydraulic Fluid Reservoir Capacity	2.0 gals US (7.6 liters)
Rated Output Pressure	10,500 psi (724 bar)



# STRUTS

AMKUS offers a complete RescueStrut telescoping and hydraulic system that's easy to deploy and use for vehicle stabilization, and forcible entry.

## RESPOND FASTER

RescueStruts are fully assembled and include a single pin adjustment for a quick response. In addition, the telescoping strut is available in multiple lengths with 10,000 lbs of holding capacity.

## A SMARTER TOOL

Don't get caught short! The RescueStrut system telescopes to 110". In addition, a large anchor ring allows for multiple points for strap attachment.

## MULTI-FUNCTION CAPABILITY

A wide variety of strut heads are available that work across the entire RescueStrut family. The strut base includes multiple attachment points for maximum flexibility.

## RESCUESTRUT



## AMK-HLS16E HYDRAULIC STRUT

- 6,000 lb hydraulic lifting capacity at full extension
- Easy to adjust inner extension tubes
- Large and balanced carrying handle
- Large anchor attachment ring
- Multiple attachment options on foot plate
- Large assortment of accessories available

## AMK-TAS45E TELESCOPING STRUT

- 10,000 lb holding capacity at full extension
- Simple single pin adjustability
- Fully assembled and ready to use
- Completely adaptable for vehicle stabilization and structure support

AMK-HLS16E Hydraulic Strut

AMK-TAS45E Telescoping Strut



### RescueStrut Foot Base

- Removable base with a large stable footprint
- Multiple attachment points, including chain slots and bull ring
- Accepts straps, chains, pickets, and stakes
- Chain not included

### Unique Locking Pin

- One piece flip lock spring pin means you'll never fumble with cotter keys again



AMK-SLAPIN

AMK-HSL16E	
Lift Capacity	6,000 lbs (26.7 kN)
Stroke	15 or 12 inches (381 or 305 mm)
Weight	59 lbs (26.7 kg)
Min Height	61 inches (155 cm)
Max Height	100 inches (254 cm)
Min 2:1 Safety Factor	

AMK-HLS16E				
Lengths Available	3 ft (.9 m)	4 ft (1.2 m)	5 ft (1.5 m)	6 ft (1.8 m)
Holding Capacity	10,000 lbs (44.5 kN)	10,000 lbs (44.5 kN)	10,000 lbs (44.5 kN)	10,000 lbs (44.5 kN)
Weight	20 lbs (9 kg)	24 lbs (10.9 kg)	27 lbs (12.2 kg)	30 lbs (13.6 kg)
Min Height	36 inches (914 mm)	48 inches (122 cm)	60 inches (152 cm)	72 inches (183 cm)
Max Height	48 inches (122 cm)	70 inches (178 cm)	84 inches (213 cm)	110 inches (279 cm)
Min 2:1 Safety Factor				



# PACKAGES

## PACKAGES

The RescueStrut system offers multiple options of system components packaged together to solve tactical and departmental needs

### AMK-FSWA16 STANDARD PACKAGE:

- 2 - Hydraulic Lifting Struts
- 2 - Telescoping Adjustable Struts
- 4 - Tube Adapters
- 4 - Standard Heads
- 4 - Ratchet Straps
- 3 - 5/16 Grade 70 Attachment Chains
- 2 - Multi Hook Clusters
- 2 - 15 inch J-Hooks



Standard Universal AMK-HSTDUP



Hydraulic Strut Handle Position

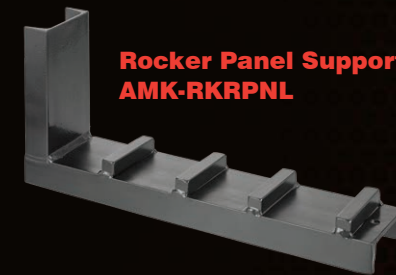


# RAM/JACK

## AMK-HRJ16R RAM/JACK

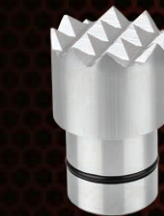
- Hydraulic Ram/Jack with Base
- The shortest, most versatile lifting jack in the industry
- Allows application in confined spaces whether horizontal, vertical or angled
- Includes specially designed waffle head and rocker support panel

Lift Capacity	6,000 lbs (26.7 kN)
Weight	35 lbs (15.9 kg)
Length Closed	31.5 inches (800 mm)
Length Extended	46.5 inches (118 cm)



Rocker Panel Support AMK-RKRPNL

Hydraulic Ram/Jack with Base AMK-HRJ16R



Waffle Pattern AMK-HWAFLE



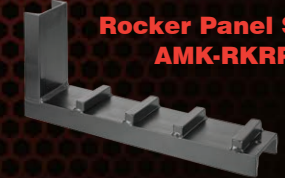
- Ram/Jack Conversion Kit**
- Converts hydraulic strut into Ram/Jack



Ram/Jack AMK-RJCK16



Waffle Pattern AMK-HWAFLE

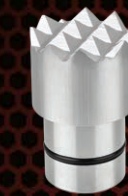


Rocker Panel Support AMK-RKRPNL

# ACCESSORIES

## STRUT HEADS

All heads are interchangeable throughout the system and are made of hardened aluminum. Individual heads are engineered for specific uses like soft woods, chain supports or cradling. Large surface areas and angle correct designs deliver maximum contact, safety and performance



Waffle Pattern AMK-HWAFLE



Standard Universal AMK-HSTDUP



Wedge Pattern AMK-HWEDGE



Duckbill Pattern AMK-HDUKBL



Pyramid Pattern AMK-HPYRMD



Ratchet Strap AMK-RCHTST



5/16 Chain AMK-C70516



Multi Hook AMK-CLUSTR



J-Hook AMK-JHOOKC



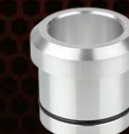
Adjustable Screw Head AMK-SCRHD



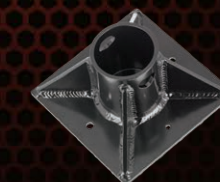
Picket Anchor Pin AMK-PIKET1



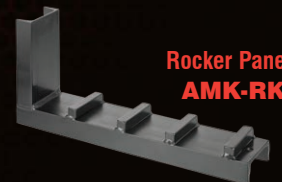
Base Anchor Stake AMK-STAKE1



Adapter AMK-UTADPT



Stationary Base vertical/horizontal AMK-STACUP



Rocker Panel Support AMK-RKRPNL



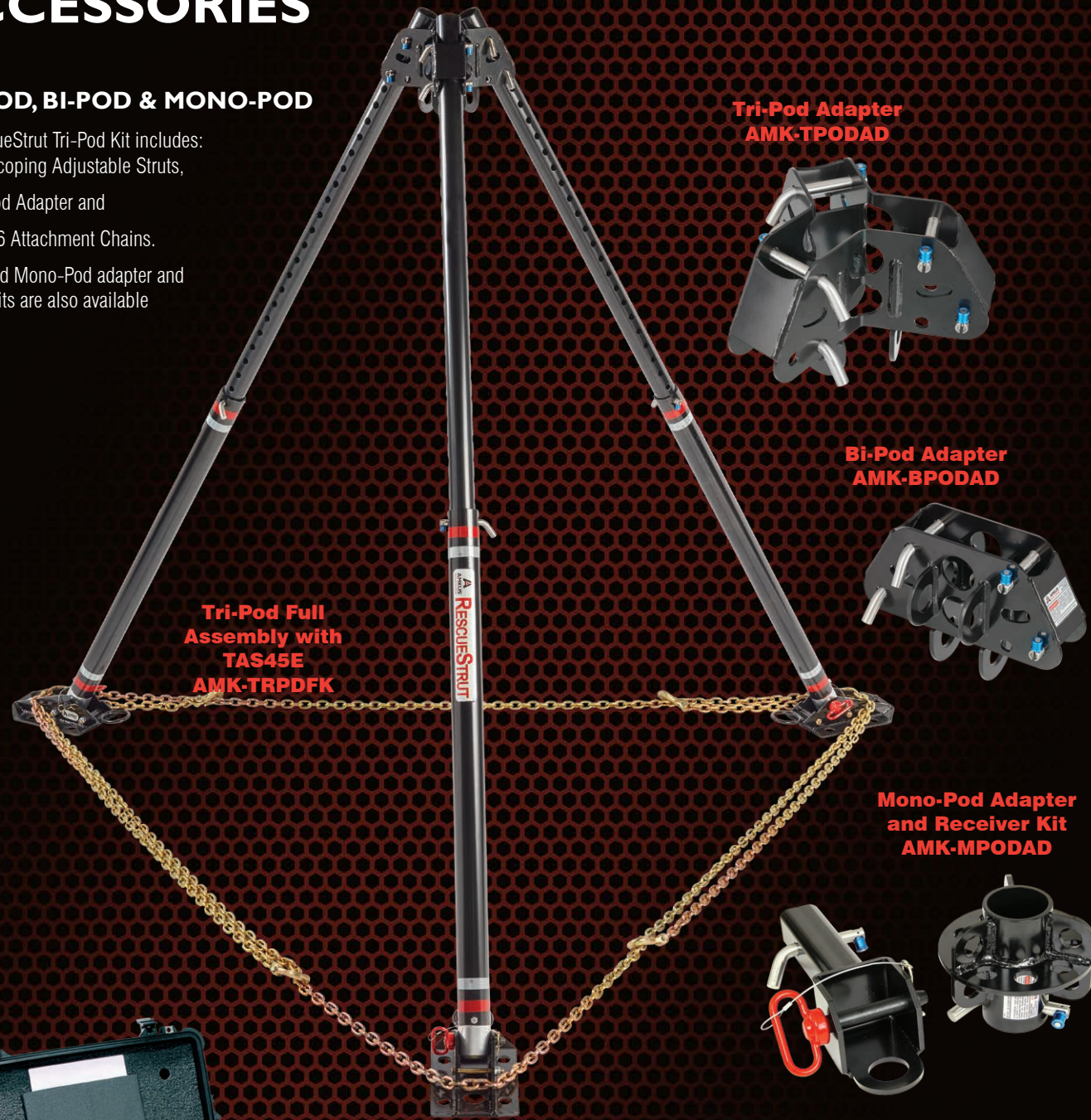
# ACCESSORIES

## TRI-POD, BI-POD & MONO-POD

The RescueStrut Tri-Pod Kit includes:

- 3 Telescoping Adjustable Struts,
- 1 Tri-Pod Adapter and
- 2 - 5/16 Attachment Chains.

Bi-Pod and Mono-Pod adapter and receiver kits are also available



**Tri-Pod Full Assembly with TAS45E AMK-TRPDFK**

**Tri-Pod Adapter AMK-TPODAD**

**Bi-Pod Adapter AMK-BPODAD**

**Mono-Pod Adapter and Receiver Kit AMK-MPODAD**

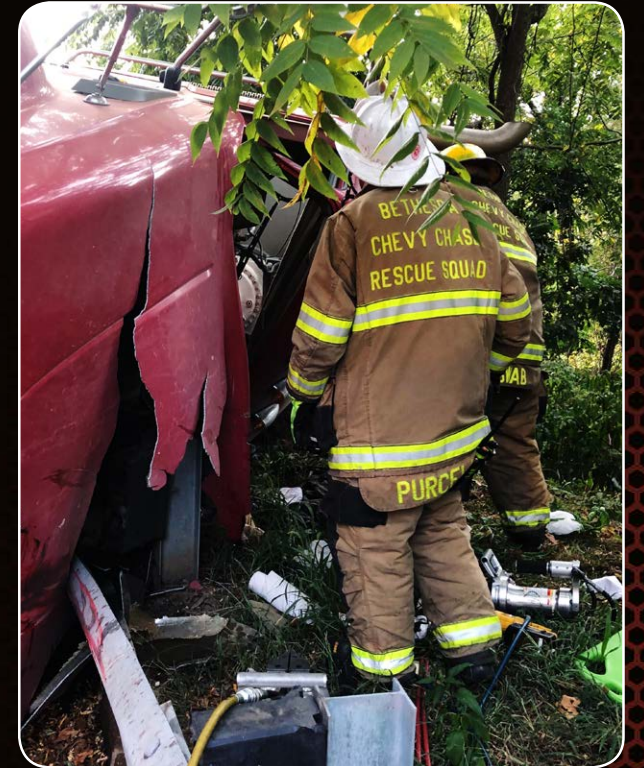
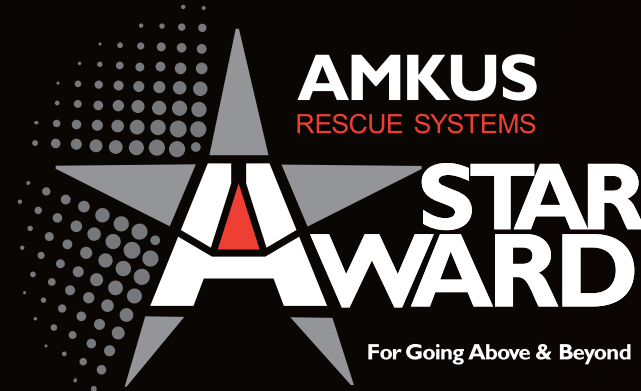


## ARRSI ROPE RESCUE SYSTEM

- Sets up in under 2 minutes
- Reduces number of rescuers needed topside (2 people can do the work of approximately 8-10 used in traditional rope rescue)
- Rope automatically aligns with the direction of the load
- Precise control allows a load to be raised and lowered a fraction of an inch at a time for critical precision lifting

# AMKUS STAR AWARD PROGRAM

Every day, men and women in the Fire and EMS community encounter life and death situations. In an attempt to recognize the heroic efforts of rescue personnel worldwide, we have established the AMKUS Star Award Program. The AMKUS Star is awarded to personnel involved in outstanding rescue efforts utilizing AMKUS tools. Fire Departments are able to self-nominate via our online nomination form and recipients receive an AMKUS Star patch and certificate of recognition.



AMKUS STAR AWARD WINNER: BETHESDA CHEVY CHASE RESCUE SQUAD



## CUSTOMER SUPPORT

AMKUS tools are designed for the demanding use of first responders, however, occasionally the tools require maintenance or service. Support can be obtained via your local authorized AMKUS dealer or the AMKUS Headquarters service department.

**EMAIL**  
[experts@amkus.com](mailto:experts@amkus.com)

**DOMESTIC**  
**800-592-6587**

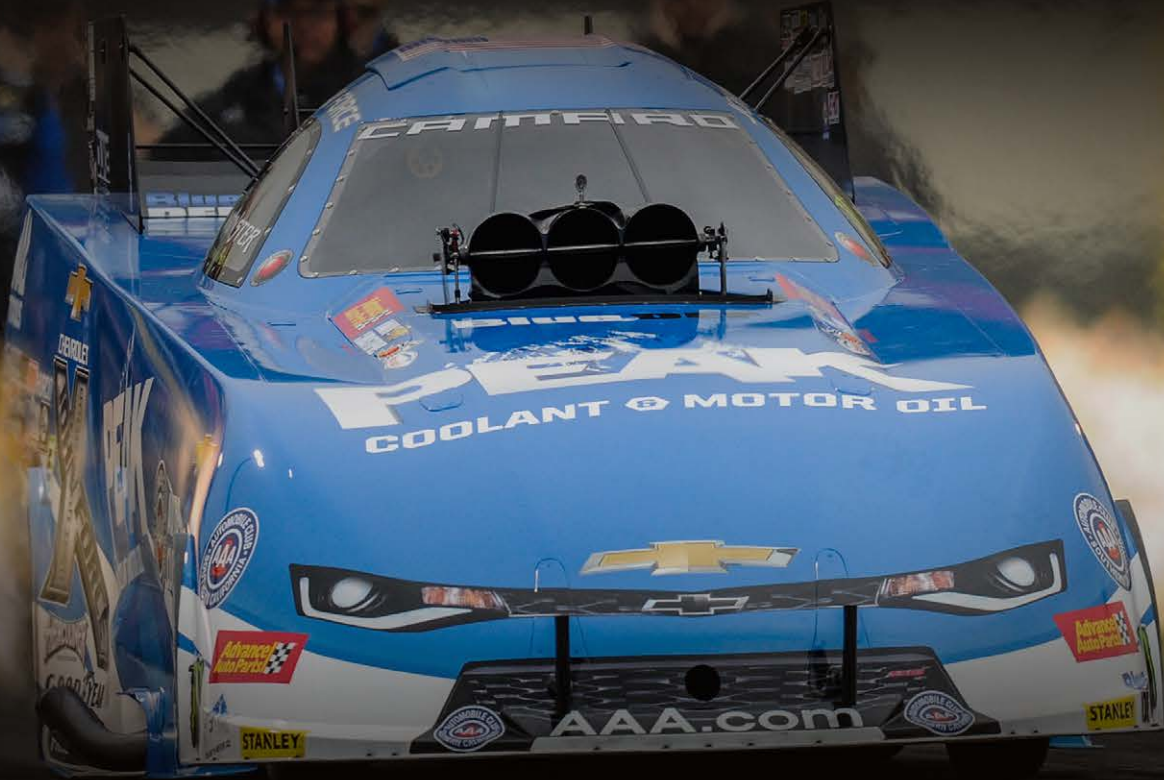
**INTERNATIONAL**  
**+1 219-548-5000**



# MOTORSPORTS

In 1984, AMKUS conducted a demonstration of its extrication equipment for NASCAR and Daytona International Speedway staff in Daytona Beach at a hotel parking lot not far from the beach. AMKUS supplied rescue tools that year to the Daytona International Speedway and NASCAR ... and a winning partnership was born.

Today, Track Services Safety Teams carry AMKUS Rescue Systems tools at every NASCAR-sanctioned event. In 2014 the AMKUS racing family expanded again, adding the NHRA (National Hot Rod Association), ARCA and IMSA. These relationships continue and we believe that our relationship with professional motorsports is the ultimate proving ground for AMKUS product innovation.



AMKUS.com • 800-592-6587 • experts@amkus.com • 4201 Montdale Drive, Valparaiso, IN 46383



*AMKUS Rescue Systems reserves the right to make changes in design and specifications without notice.*