

FIREFIGHTING

LIFELINE GEN 3 FIRE



Powerful, portable, all-in-one rescue tools for firefighters and other first responders.



FIELD APPLICATIONS:
STRUCTURAL FIRES INCLUDING;

Sheetrock
Internal wall components
Prying and breaching

MVA OPERATIONS
INCLUDING,
Laminated front and side windows
Front and side Air bags
Seat belts, carpets and upholstery

High-performance specialty tools for firefighting professionals.

LIFELINE FIRE™ is designed to improve personal safety and tactical effectiveness, allowing a firefighter to take immediate action during entanglement situations and other unexpected emergencies.

**NEW Thin Red Line Series*





FIRE™

The FIRE™ Tactical Rescue tool is the original and internationally known flagship device. It is primarily designed to serve as a personal self-extrication and egress device for firefighters. The tool is extremely effective for entanglements, wall breaching, MVA's, and RIT. FIRE™ has been field tested by the world's finest fire departments and military professionals.



More useful than single purpose tools. FIRE™ functions like 5 or more tools in 1 handheld device.



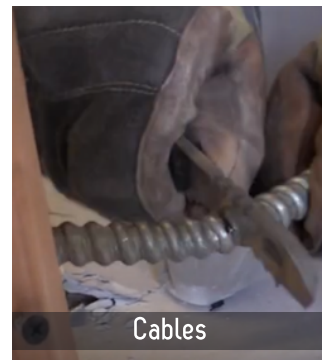
Laminated Safety Glass



Seat Belts



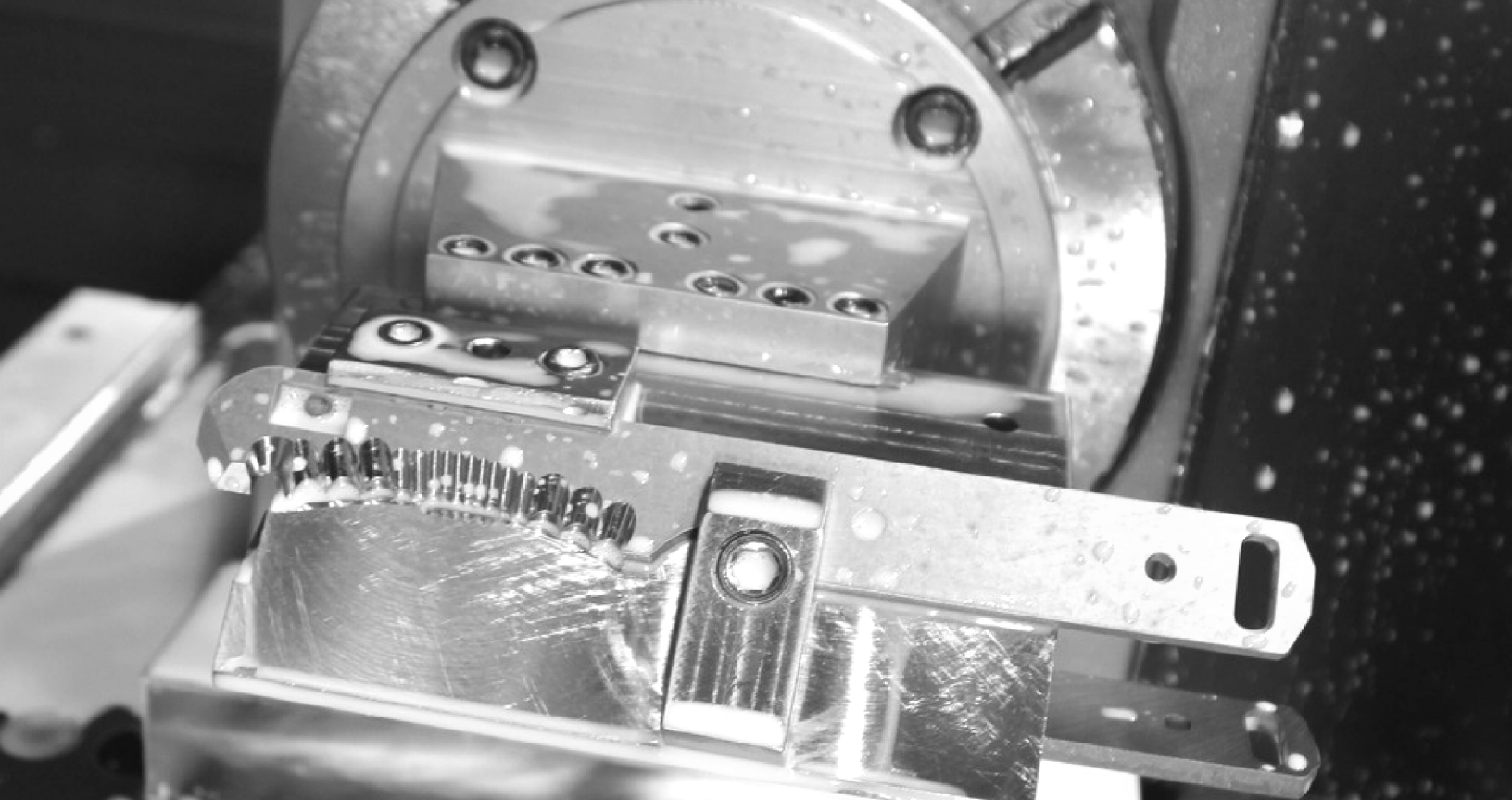
Sheet Rock



Cables



Wires

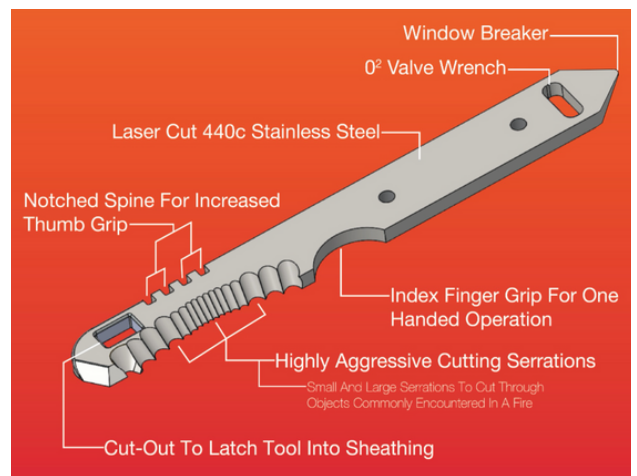


MADE IN THE USA

LIFELINE® Tactical Rescue tools are proudly designed and manufactured in the United States of America. In order to ensure the highest quality products, LIFELINE® only uses materials and component parts that are 100% sourced from the U.S.

Each product is made from American-made 440c steel. Heat injection molded handles and sheath, blade coatings, laser engraving and even product assembly are all done here in the United States.

Manufacturing partners include;
 DuPont™ Zytel
 Vergason Technology - BlackCat™



FIRE™ Rescue Tool with Thin Red Line Option

The next evolution of Lifeline® Tactical Rescue Tools is engineered to military specs and is the only non-battery operated handheld tool that's like having 5 or more tools in one handheld device. Gen 3 FIRE™ gives firefighter's an invaluable advantage in the field, increasing personal safety during structural fires, motor vehicle accidents, and other emergency situations.

FIRE™ is lightweight with large and small serrations engineered to cut the type of materials first responders encounter. From sheetrock, internal wall components, wiring, PEX tubing, and drop ceiling components, to laminated front and side windows, and seat belts.

This all in one heat rated multi-functional rescue tool is designed for easy accessibility from SCBA and turnout gear attachment points.

Product Details

Blade Specification:

- Size - 3/16" Thick Laser Cut Blade
- Material - 100% American Made 440c Steel
- Highly Aggressive Patent-pending Serrations
- BlackCat™ Coated for Durability and Corrosion Resistance
- Thin Red Line option on BlackCat™ blade and sheath
- Aggressive breaker at the back of the tool, highly effective against laminated glass and creating starter holes before cutting.

Sheath and Handle Specifications:

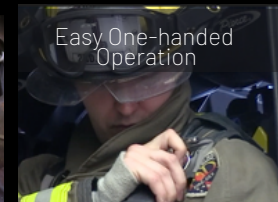
- Heat Injected DuPont Zytel® ThermoPlastic - Heat Resistant to 572 Degrees Fahrenheit

Hardware:

- Black Oxide Hardware
- D-ring



Price: \$149/165



Important: New ejection mitigation law now requires automakers to make side windows from laminated safety glass, making all **existing window breaker tools obsolete.**

NEW NATIONAL HIGHWAY TRAFFIC SAFETY ADMINISTRATION) MANDATE IMPACTS ALL FIREFIGHTERS

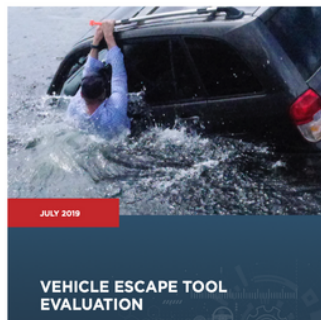
Since 2017 one in three cars has been manufactured with side laminated windows. NHTSA mandate (fully implemented in 2020) requires all U.S. automakers to manufacture side windows from laminated safety glass. While this mandate helps to keep drivers safely inside their vehicle during a motor vehicle accident, it makes it challenging for first responders to take immediate action at the scene of an MVA.

LIFELINE® recognized the importance of providing first responders with the best extrication tool possible, especially understanding the impact this new mandate will have on their ability to react quickly and effectively in the field.

The GEN 3 FIRE™ is a military grade cutting machine, capable of cutting laminated safety glass with great speed and efficiency.

To learn more about this mandate, visit; <https://lifelinerescuetools.com/DOTMandateBlog>

AAA reports, "New research finds vehicle escape tools effective in breaking tempered side windows, but not laminated"



5.4 Results & Observations

Each tool was evaluated based on the described pass/fail criteria. A tool was considered to pass (overall) if it was successful for at least two of the three tests. A table of results for the glass-breaking tests are shown below. Note in the results that only two tests were performed for laminated windows for each tool. During testing, it became evident that the vehicle escape tools could crack, but not shatter, the laminated glass. A tool was already considered to fail over/roll after two failed tests, thus mitigating the need for a third test.

Tool Type	Tool No.	Tempered Automotive Glass			Laminated Automotive Glass*		
		Shatters/ Cracks	Shatters/ Breaks	Pass/Fail	Shatters/ Cracks	Shatters/ Breaks	Pass/Fail
Tool No. 1	1	1	1	PASS	1	1	FAIL
	2	1	1	PASS	1	1	FAIL
	3	1	1	PASS	1	1	FAIL
Hammer Type Tool	2	0	0	FAIL	0	0	FAIL
	3	0	0	FAIL	0	0	FAIL
	4	0	0	FAIL	0	0	FAIL
Tool No. 3	1	0	0	FAIL	0	0	FAIL
	2	0	0	FAIL	0	0	FAIL
	3	0	0	FAIL	0	0	FAIL
Tool No. 4	1	1	1	PASS	1	1	FAIL
	2	1	1	PASS	1	1	FAIL
	3	1	1	PASS	1	1	FAIL
Spring Loaded Tool	1	1	1	PASS	1	1	FAIL
	2	1	1	PASS	1	1	FAIL
	3	1	1	PASS	1	1	FAIL
Tool No. 6	1	1	1	PASS	1	1	FAIL
	2	1	1	PASS	1	1	FAIL
	3	1	1	PASS	1	1	FAIL

* Indicates the glass did not crack or break after 3 impacts.

Note: 1 Escape tool broke during initial impact.

Note: Laminated windows were only tested with two windows per tool (two tools could not penetrate glass).



ACCESSORY AND ATTACHMENT POINT OPTIONS



TEK-LOK Attachment Option



Flashlight Strap Option

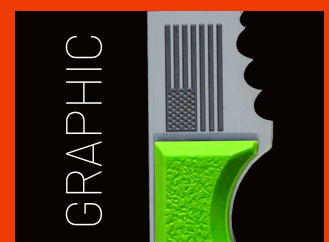


HIGH QUALITY LASER ENGRAVING AND PERSONALIZATION

Lifeline® offers personalization options to the blade area of the tool. Choose from our our library of patriotic icons or add department logo or text including unit and rank.



PERSONALIZED TEXT



GRAPHIC

Anthony Zaccaro Jr., FDNY

"While performing a search at a building, a fire member became entangled in hanging wires, the tool was used to effectively cut through wires causing the entanglement. When entangled again the knife and case were ruled from the mounting and unable to be recovered after the incident Acknowledgment."

FDNY Lieutenant

"While performing a search at a building, a fire member became entangled in hanging wires, the tool was used to effectively cut through wires causing the entanglement. When entangled again the knife and case were ruled from the mounting and unable to be recovered after the incident Acknowledgment."

~ Thank you, Lieutenant. Your testimonial qualifies you for our drop and replace warranty program. A new tool is on the way.

Lifeline Customer Support

MVA with Entrapment | Ringwood, NJ

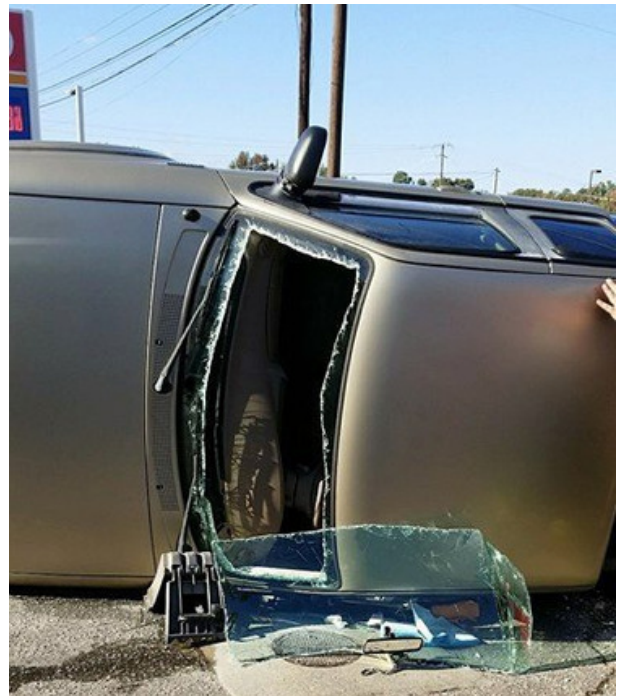
While driving southbound on Route 208, I witnessed a passenger vehicle veer right into the shoulder and make contact with a snowbank and guard rail then flip to stop on its hood and roof. I dismounted my vehicle with my Lifeline Extrication Tool in hand. Upon further sizeup of the vehicle, I found that the fuel tank was leaking. After performing a rapid physical assessment, I braced the victim with my shoulder, removed the Lifeline Extrication Tool from its sheath, found a safe area away from the victim's body and with a few passes of the tools' teeth, I freed the victim from the seat belt with ease.



From a Firefighter Brandon Wayne Edwards with CFD:

"Today while operating on a MVA with entrapment Engine Company 30 arrived on scene, assessed the vehicle and decided to provide access thru the windshield, for rescue and truck companies in route to the scene. Crews used the LIFELINE™ Tactical Self-Extrication Tool, a personal extrication tool to start removing the windshield for patient evaluation and access.

The ease of making an access point with the butt of the tool and then transitioning to cutting the windshield and removal of the windshield was easily accomplished. Clean cuts with minimal shards and glass dust were very evident. Leaving a good access point for patient evaluation, once the windshield was removed the patient was able to walk out of the vehicle through the removed windshield and taken to ems crews for an evaluation."





LIFELINE[®]

Tactical Rescue Tools

LIFELINE Tactical Rescue Tools prides itself on providing world-class customer service experience.

Contact: Vincent Rao, President

Phone: 973-600-4224

Email: vrao@lifelinerescuertools.com

Mail: 1 Ethel Avenue

Hawthorne, NJ 07506

LifelineRescueTools.com